

# RACE BOOK

**UCI Mountain Bike Enduro World Cup  
Derby, Tasmania**

*Supported by the Tasmanian Government through Events Tasmania*

**30 March - 1 April, 2023**

**UCI Mountain Bike Enduro World Cup Round 2**

## SCHEDULE

Section 1 - Page 3

Schedule

V1

## EVENT NOTICES

Section 2 - Page 3

Event Updates and Rider Forum

original

## CONTACTS

Section 3 - Page 3

Series and Organizer contacts

original

Websites and Social Media

original

## MAPS

Section 4 - Page 4

Location

original

Venue Map

original

Course Map

to be published

Spectator Map

to be published

## ENTRIES

Section 5 - Page 5

Event Entry Structure Overview

original

Registration

original

Entry Fees

original

Cancellation Policy

original

Race Licences

original

Insurance

original

Disclaimer/ Liability Release

original

Rider Confirmation and Plate Collection

original

Rider Briefing

original

## COURSE

Section 6 - Page 8

Overview

original

Course Map

to be published

GPS Route Map

to be published

Course Preview Videos

to be published

Liaison Information

to be published

## RACE LOGISTICS

Section 7 - Page 9

Training

original

Uplifts

original

Timing and GPS Trackers

original

Onboard Cameras

original

Equipment and Bike Marking

original

E-EDR Open Racing Equipment Rules

original

Feed Zones

original

Technical Assistance Zones

original



## START LISTS, RESULTS and RANKINGS

Section 8 - Page 11

Start Order, Seeding and Start Lists	original
Live Timing and Results	original
Ranking Points	original
Awards	original
After Party	original
Prize Money	original

## RULES

Section 9 - Page 14

Race Rules	original
Protests and Complaints	original
Protection Rules	original
Onboard Cameras	original
Doping Control	original

## VENUE LOGISTICS

Section 10 - Page 15

Travel and Transportation	original
Accommodation	original
Parking	original
Bike Wash	original
Bike Shops	original
Grocery Stores	original
Bank Machines	original
Toilets	original
WIFI and power	original
Other Riding Zones	original
Places of Interest	original

## MEDICAL

Section 11 - Page 18

Emergency Response	original
Hospital / Clinics	original
Concussion Protocol	original
Massage and Physiotherapy	original



## 1. SCHEDULE | [return to menu](#)

Sunday March 26 | Course Release [All stages closed for riding until training]  
Wednesday March 29 | Rider Confirmation | 18:00 Press Conference  
Thursday March 30 | 09:00 - 17:00 Practice All Riders  
Friday March 31 | 09:00 - 17:00 Open Racing  
Saturday April 1 | 09:00 - 17:30 World Cup

## 2. EVENT NOTICES | [return to menu](#)

### **UPDATES and QUESTIONS / FEEDBACK**

#### **EVENT COMMUNICATIONS / WHATSAPP**

QR code / link to be added by ESO for the Whatsapp groups

Join the Racer Whatsapp Group to receive urgent updates throughout the week - course delays, schedule changes etc.

World Cup: link TBC

Open Racing: link TBC

Forum [link TBC]: connect with your fellow racers, ask questions / make comments, report issues, ...

## 3. CONTACTS | [return to menu](#)

### **SERIES and LOCAL ORGANISER CONTACTS**

Race Director: Ian Harwood [ian@emsaustralia.net.au](mailto:ian@emsaustralia.net.au) +61 404 326 169

Race Manager: Rebecca Harwood [rebecca@emsaustralia.net.au](mailto:rebecca@emsaustralia.net.au) +61 499 303 280

Accommodation & Expo: Ally Gray [info@emsaustralia.net.au](mailto:info@emsaustralia.net.au) +61 407 113 002

Registration and Teams/Racers: Kerry and Beth [sportsservices@eso-sports.com](mailto:sportsservices@eso-sports.com)

Team Contacts / Account Manager: Bex Reilly [bex.reilly@eso-sports.com](mailto:bex.reilly@eso-sports.com)

Media Inquiries / Accreditation: Kate Ball [kate.ball@eso-sports.com](mailto:kate.ball@eso-sports.com)

### **WEBSITES and SOCIALS**

Website: [www.ucimtbworldseries.com](http://www.ucimtbworldseries.com)

Instagram: @uci\_mtbworldseries / @endurotasmania

Twitter: @MTBworldseries



## 4. MAPS | [return to menu](#)

### LOCATION

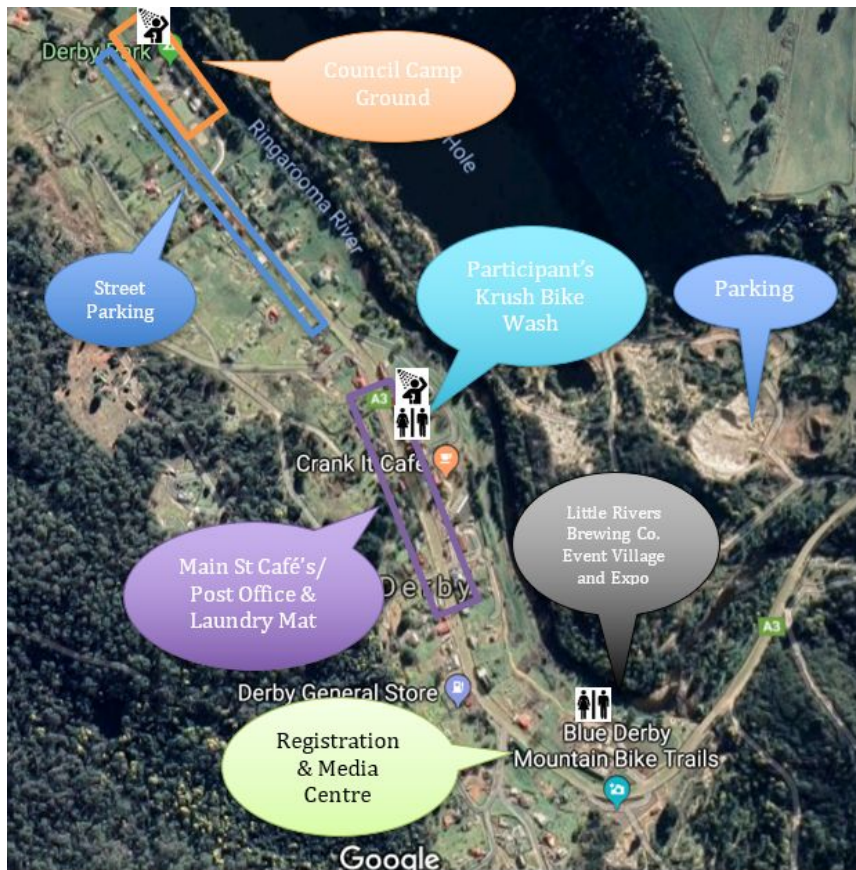


**Blue Derby Bike Park**, Tasmania, Australia, [Google Map](#)

Event Hub will be based across from Blue Derby Mountain Bike Trail Centre trailhead.

Race and Media Office is located in Derby Town Hall.

### VENUE MAP



### COURSE MAP

to be published Sunday 26 March!

### SPECTATOR MAP

Coming Soon!



## 5. ENTRIES | [return to menu](#)

### EVENT ENTRY STRUCTURE OVERVIEW

		
<b>RACE CATEGORIES</b>	Women Elite Women U21 (2003-2006) Men Elite Men U21 (2003-2006)	Women Women U17 (2007-2008) Women U21 (2003-2006) Women Master 35+ (1988+) Men Men U17 (2007-2008) Men U21 (2003-2006) Men Master 35+ (1988+) Men Master 45+ (1978+)  <i>Any race category with fewer than 5 starters may be merged with another age category at the discretion of the Event Organiser.</i>

### REGISTRATION

#### RIDER ACCOUNTS

All riders need a UCI MTB World Series rider account (linked to a unique email address)  
 Create your account / access your profile at <https://www.ucimtbworldseries.com/login/>

#### WORLD CUP - TIER 1

In order to race in the UCI Enduro World Cup, riders must either be on an official UCI Enduro or Mixed Team or have the minimum required number of EDR Global Ranking points.

Minimum Points:

- Men Elite: 125 points
- Women Elite: 125 points
- Men U21: 75 points
- Women U21: 50 points

Eligible riders will receive email notification with registration instructions / details.

#### OPEN RACING - TIER 2

No prequalification requirements  
 Public entries offered on a space available, first come basis.  
<https://www.ucimtbworldseries.com/events/maydena>



## **ENTRY FEES**

UCI Enduro World Cup: €150

EDR / E-EDR Open Racing: €160

Entries include all taxes and processing fees.

Entries will be processed through the centralized UCI MTB World Series entry system in EUROS (€).

The Enduro Sports Organization Limited is acting as agent for Event Management Solutions Australia Pty Ltd.

Entry fee includes 2 day race, 1 day of closed course marshalled training, full course medical coverage on training and race days, race day feed zone, race day neutral tech support, live timing, backup timing.

## **CANCELLATION POLICY**

Organisers reserve the right to modify the schedule, format, duration, course, individual race stages or any other aspect of the Event, or delay or cancel the Event (or any individual race stages), if they believe the conditions are unsafe or otherwise unsuitable for the Event.

If an Event is relocated and/or rescheduled, the entries will be automatically transferred to the new date and/or location.

If a Racer is unable to attend the scheduled/ rescheduled dates and/or venue, the entry fees are refundable upto 30 days before (less €30 processing fee). See section 2.4. WITHDRAWAL within Event Entry T&C's.

## **RACE LICENSES**

UCI ENDURO WORLD CUP

Race licenses are mandatory for eligibility and event entry.

International riders must have UCI licenses issued by their own national cycling federations.

Australian racers will have the option to race with an AusCycling race license. You will need to record a UCI ID number in your Rider Account (this ID number is available through the AusCycling website at no additional charge to the race license)

<https://www.auscycling.org.au/membership>

Riders will be required to present their licenses at the onsite check in. Photos or electronic copies are acceptable.

OPEN RACING

AusCycling or equivalent memberships required. Day licences are also accepted.

<https://www.auscycling.org.au/membership/other/event-licences>

Please note: The one event licence is valid from the day of purchase so please time your purchase of this to be valid for the race requirements (practice and race day)

Active / valid UCI ID numbers required for riders to be eligible to collect EDR World Cup qualifying points. Number to be recorded in Rider Account.



## **INSURANCE**

Personal insurance coverage is not provided by the ESO/Organisers.

Racers are responsible for securing their own accident, rescue, health, travel, property and liability insurance.

Racers should have the following insurance coverage:

- Bodily injury (in and out-patient hospital expenses and medical care, emergency rescue and medical transport costs, permanent disablement, death) and material damages (loss of earnings) in case of accident in the course of the Event or during training
- Third-party liability insurance for material damage or bodily injury caused to others in the course of the Event or during training.
- Reimbursement of the entry fees and other ancillary costs resulting from an inability to participate in an Event

## **DISCLAIMER / LIABILITY RELEASE**

Racers voluntarily assume full and complete responsibility for all risks associated with participating in the Event and for any injury, accident or damage that may occur during their participation in the Event, including by way of example and not limitation: (a) travelling to and from the Event; (b) falls; (c) mechanical failures of equipment; (d) collisions with other participants, spectators and fixed or moving objects; (e) the effects of weather, including temperature extremes; (f) use of chairlifts, gondola or shuttle vehicles; (g) traffic accidents; (h) trail and road conditions; and (i) the negligence of themselves and/or others.

## **RIDER CONFIRMATION AND PLATE COLLECTION**

Derby Hall (Corner of Krushka & Main St)

### **HOURS**

Wednesday 29th March

14h00-14h45 - UCI Enduro World Cup Elite Team Riders

14h45-15h30 - UCI Enduro World Cup Team Riders

15h30-18h00 - All Riders (UCI Enduro World Cup and Open Racing)

Thursday 30 March - 08h00-09h00 - All Riders

Saturday & Sunday | no registration

Check in Deadline: Riders who have not collected plate / checked in by 09h00 Thursday will not be included on the Start List.

Altering, cutting, or placing of unauthorized stickers or sponsor logos on race plate is not permitted.

Check in Deadline: Riders who have not collected plate / checked in by 09h00 Thursday will not be included on the Start List.

Altering, cutting, or placing of unauthorized stickers or sponsor logos on race plate is not permitted.





Managers/coaches/parents can collect packages on behalf of racers, providing;

- The riders license or day license is presented, including the completed waiver
- Parental authorization (if applicable)
- Rider rights agreement
- All updates to Perkins account is accurate and current. Including emergency contact, medical conditions, insurance etc)

### **RIDER BRIEFING**

All rider communications will take place electronically - all notices to be sent via email and whatsapp. Join the Racer Whatsapp Group to receive urgent updates throughout the week - course delays, schedule changes, .. Link to be published .

## **6. COURSE** | [return to menu](#)

### **MAP and GPS ROUTE:**

Course will be released as per schedule above (26 March). All stages closed for riding until official practice.

**Terrain Type:** The stages will see the continued progression of both speed and technicality in enduro racing, on trails purpose built for enduro bikes.

#### **Course Overview**

UCI Enduro World Cup: TBC

Open Racing: TBC



## 7. RACE LOGISTICS | [return to menu](#)

### **TRAINING**

Official training will take place on Thursday 30 March and each racer will be limited to 1 training run on each Special Stage.

Race stages are closed during official training to all but racers, media and official UCI Enduro World Cup Team staff. All riders on course during practice must have plates on their bikes. Any rider training without a plate or outside the official schedule will be disqualified.

### **UPLIFTS**

There is no uplift available at Derby Bike Park for training or racing.

### **TIMING & GPS TRACKING**

Timing system: SPORTident AIR+ system

Racers must carry their Timing Chips on their wrists.

Racers are responsible for 'dibbing in' at all Official Time Checks. This includes the Pre-Start Time Check located close to the start line of every Special Stage.

If requested by ESO, a racer must carry an official GPS/tracking device or POV camera supplied by ESO during competition. The GPS/Tracking units and POV cameras will be distributed to the select riders before the start. Failure of a racer to carry their allocated device will result in a 500 EUR fine. All data will remain the right of ESO.

Riders **will be charged** for any timing chips, GPS units or POV cameras not returned at the finish line.

### **ON BOARD CAMERAS**

Only official UCI Teams and partners will be allowed to film at Tier 1 events (subject to the terms of the ESO Broadcast Rights Agreement).

Only riders from official UCI Teams and partners will be permitted to wear onboard cameras during race days at Tier 1 events. All rights will be retained by ESO.

Any onboard camera or live streaming of competition by riders or teams must be pre-approved by ESO before broadcast.

All broadcast rights for Tier 1 events remain the right of ESO.

### **ESO / UCI camera waiver**

Any racer wearing an onboard camera during Official Training or races at a Tier 1/2 EDR event is deemed to have read and agreed to the Union Cycliste Internationale (UCI) [Technical Regulations](#) document, article 1.3.006 BIS. Please see the EDR Rulebook for further info.



## **EQUIPMENT AND BIKE MARKING**

Only one frame, fork and one set of wheels can be used by a racer during a race.

Only upon approval of the Commissaire or Race Director, a racer may replace a frame, fork or wheel during the race.

A 3 minute penalty will be awarded to every racer who, having received approval by the Commissaire or Race Director, replaces the equipment listed above. Any racer found to have replaced a frame, fork or wheel during the race without consent from the Commissaire or Race Director will be disqualified (DSQ).

A racer can use different/unmarked equipment during Official Training

Equipment Marking Stickers must be utilized at all **Tier 1 events**. Stickers must be applied on the rider's right hand side of the bike. This is not a requirement for Open Racing.

- Fork Crown triangle
- Swingarm / Rear triangle
- Front wheel triangle
- Both wheel rims

Stickers must be placed on the bike by the racer prior to the race start. Any problems with the Stickers must be reported to the Commissaire or Race Director at the earliest opportunity and/or prior to race start.

Racers who lose their Stickers prior to the race start may be issued a time penalty.

Racers' bikes will be checked for marking at the start of the race and at the finish of the final Special Stage. Other random checks of stickered equipment will be carried out throughout the race. Following a repair, the racer must return to the Commissaire or Race Director to have the replacement part(s) re-marked (if applicable) before rejoining the race.



## **E-EDR OPEN RACING EQUIPMENT RULES**

Motors are limited to 25 kph as per EU standard EN15194. Bikes shall have a motor of no more than 250w of continuous rated power and which is only to be activated by pedalling. Walk function allowed but only in factory settings

Riders are limited to one battery. There will be no technical restrictions on batteries.

## **FEED ZONES**

There will be one feed zone on course which will provide fruit, bakery items, and drinks.

Water will be available at the Event Hub.



## **TECHNICAL ASSISTANCE ZONE (TAZ)**

### **UCI Enduro World Cup**

Technical assistance is only permitted in the Technical Assistance Zone.

### **Open Racing**

Outside assistance is permitted.

## **8. START LISTS, RESULTS AND RANKINGS** | [return to menu](#)

### **START ORDER, SEEDING & START LISTS**

#### **UCI Enduro World Cup**

Riders will be seeded based on a combination of their current 2023 EDR World Cup and Global ranking, their final 2022 EWS Series and Global Ranking, and (if applicable) UCI EDR team status.

Men U21

Women U21

Women Elite (*outside top 10*)

Men Elite (*outside top 30*)

Women Elite (*top 10 EDR World Cup rank and protected riders*) - Group A

Men Elite (*top 30 current EDR World Cup rank and protected riders*) - Group A

The Top 20 Men Elite and Top 10 Women Elite will be awarded a fixed number board in relation to their 2022 EWS World Series ranking for the entire season.

**Protected Riders** - Riders with a fixed number plate relating to a previous year's ranking of top 20 (Men) and top 10 (Women) will be protected in the seeding for each UCI Enduro World Cup race. Any rider with a fixed number, not ranked within the Top 20 (Men) and Top 10 (Women) will start in order of the lowest number first from 21<sup>st</sup> place (Men) and 11<sup>th</sup> place (Women).

Select riders chosen by ESO Sports, including protected riders returning from injury, can be added to the start list from position 21 (Men) and 11 (Women) but following all protected riders (see above). Very select international riders not previously ranked in the UCI Enduro World Cup and chosen by ESO Sports may also be seeded following the official UCI Team riders.

Riders moving from U21 to the Men/Women Elite categories may be manually seeded by ESO for the first round of the current year.

Reseeding - Final stage / TAZ  
Group A racers will be reseeded for the final stage based on the General Classification. The start order will be fastest last.  
Any Group B racers ranked in the Top 20 (Men) and Top 10 (Women) of the General Classification will be reseeded to Group A after TAZ. A mandatory time check will be conducted at TAZ to ensure riders are reseeded accordingly.

#### **Start**

#### **Lists**

Riders in the UCI Enduro World Cup will have individual preassigned start times for all the stages.

Start intervals between riders must be a minimum of 30 seconds. A 1-minute interval should be added every 10 – 20 riders to allow a clear gap to start riders who have missed their start.



A ten-minute interval between the Group A Men and the Group A Women categories must be allocated to allow accredited media to move on track.

Start List (with individual start times) will be published after onsite check in closes (09h00 Friday).

Riders will be issued a sticker with their individual stage start times at the start platform. Racers will have preassigned start times for all stages.

Late starters will receive a fixed penalty:

Up to 5 minutes late = 1 minute penalty

5+ minutes late = 5 minute penalty

30+ minutes late = DNF

Any racer arriving at the start of a Special Stage later than 30 minutes after their specified start time will be assigned a DNF for the race and should not complete any other stages.

### **Open Racing**

Open Racing uses the self seeded Flexi Start Format.

Racers will be assigned a start time for rollout based on their Open Racing category.

Start Order:

E-EDR Men

E-EDR Men Master 35+ (1988+)

E-EDR Women

E-EDR Women Master 35+ (1988+)

EDR Men

EDR Men U21 (2003-2006)

EDR Men U17 (2007-2008)

EDR Men Master 35+ (1988+)

EDR Men Master 45+ (1978+)

EDR Women

EDR Women U21 (2003-2006)

EDR Women U17 (2007-2008)

EDR Women Master 35+ (1988+)

Once racers leave the start, they will need to complete the Special Stages in the specified order and within the designated time. But they will not be required to remain in the original start positions for the balance of the stages nor will they have preassigned individual start times or fixed start intervals for any of the following Special Stages. Riders can drop into Special Stages individually at a minimum of 5 second intervals.

Maximum course time and opening / closing times for the Special Stages will be published the day prior to the race. If a racer does not complete the course within their final time check, they will have a penalty added to their overall time.

Up to 5 minutes late = 1 minute penalty

5+ minutes late = 5 minutes penalty

Any racer arriving at the start of a Special Stage later than scheduled closing time will be assigned a DNF for the race and should not complete any other stages.



## **LIVE TIMING and RESULTS**

Race Feed and Live Timing : *TBD*

Official Results (with penalties): *TBD*

## **AWARDS**

Podium presentations will take place approximately 30 minutes after the last finishing rider. The exact time will be released in the detailed schedule.

### **UCI Enduro World Cup**

Podium presentations will be made for the top 3 riders in each category. All riders must attend the podium as scheduled – failure to attend on time may result in a 200 EUR fine and / or a forfeiture of any relevant titles or prize money.

Leaders jerseys will be awarded to the series leaders in UCI Enduro World Cup Categories. The leader's jersey is compulsory for the rider leading a UCI World Cup standing

Open Racing  
Top 3 from each race categories will be awarded  
Inappropriately dressed event staff (e.g. podium girls) are banned at all ESO event award ceremonies.

## **RANKING POINTS**

The EDR Global Rankings are based on the UCI Enduro World Cup , Tier 2 Open Racing, and Tier 3 World Series Qualifier events.

All points scored will be included in the EDR Global Rankings on a 12 month rolling basis.

### **EDR World Cup**

Both Global Ranking and UCI World Cup points are available.

Points are listed in Appendix 1 of the EDR Rulebook.

### **Open Racing**

Riders in EDR Open Races with a valid / active UCI license at the time of the race will be eligible to collect EDR Global Ranking points as well as Golden Ticket EDR World Cup direct entries. Riders should record their UCI ID number in their Rider Accounts. Refer to Chapter 3 of the Rulebook for details regarding World Series Qualifier Ranking Points.

## **PRIZE MONEY**

UCI Enduro World Cup Men and Women Elite Prize Money minimums( EUR). Total prize purse = €12600. Please note the below prize monies may differ.

<b>1st</b>	1500	<b>6th</b>	450
<b>2nd</b>	1200	<b>7th</b>	375
<b>3rd</b>	900	<b>8th</b>	300
<b>4th</b>	750	<b>9th</b>	150
<b>5th</b>	600	<b>10th</b>	75



### **AFTER PARTY**

The Dorset Hotel, Derby. To take place after presentations.

## **9. RULES** | [return to menu](#)

### **RACE RULES**

Riders are expected to read and understand the Race Book and Rule Book. Unfamiliarity will not be accepted as an excuse for any rule violation by any rider.

<http://www.ucimtbworldseries.com>

All rule violations must be filed, including the recording of witnesses, with the Commissaire or Race Director using the Rule Break Report Form available at: <https://ucimtbworldseries.com/>

No rule violation will be discussed with a rider unless a complete Rule Break Report Form has been submitted. The Race Director can appoint special 'Flying Marshals' to travel around the course at their own discretion to undisclosed points. These 'Flying Marshals' can report rule violations to the Commissaire or Race Director. ESO officials may also report rule violations to the Commissaire or Race Director.

There is no appeal process for rule decisions following the hosting of the podium. All results will stand following this time.

The Commissaire and Race Director are authorized to give additional penalties (including verbal warnings, fines, relegation of position, time or points penalty and/or disqualification) that are not listed in the Rules in the case of a rider who fails to respect the other riders, the spirit of the sport, the environment or the organization.

Race Director: Ian Harwood // +61 0404 326 169 // [ian@emsaustralia.net.au](mailto:ian@emsaustralia.net.au)

UCI Chief Commissaire: Jeremy Christmas // \*\*\*\*

### **PROTECTION RULES**

Full face helmets and knee pads mandatory during the special stages. A helmet with a detachable chin piece is acceptable. Open face helmets can be worn during liaison stages/transitions.

### **FILMING RIGHTS AND REGULATIONS**

Only official UCI Teams and partners will be allowed to film at Tier 1 events (subject to the terms of the ESO Broadcast Rights Agreement).

### **DOPING CONTROL**

All riders entered into the event must comply with all Anti-Doping regulations and procedures if asked to do so. Failure to do so will result in disqualification from that event and further penalisation as deemed appropriate by ESO.

ESO will follow all ITA rules, protocols and procedures. It is the responsibility of all riders, teams, coaches to read and follow all advice and documents provided by ITA.

Further information can be read in the EDR Rulebook.



## 10. VENUE LOGISTICS | [return to menu](#)

### **TRAVEL / TRANSPORTATION**

Launceston Airport (LST) is the closest airport to Derby. You will find frequent flights to Tasmania on most Australian airlines such as Qantas, Jetstar and Virgin Australia.

- Launceston Airport – 1 hr 30 min / 105 km drive to Derby
- Hobart International Airport – 3 hrs 35 min / 279 km drive to Derby
- Devonport Airport – 2 hrs 28 min / 192 km to Derby

### **DRIVING**

The option is available to travel with a vehicle on the Spirit of Tasmania across the Bass straight (Melbourne – Devonport).

<https://www.spiritoftasmania.com.au/>

Driving from Launceston: If towing a campervan or trailer, it may be preferable to travel via Lilydale on the B81 due to some very tight corners on the Tasman Highway. This causes little to no difference in travel time (advice courtesy of Blue Derby)

### **SHUTTLE TRANSPORT**

<https://www.updownaround.com.au/>

<https://www.premiummtbtransfers.com.au/>

<https://gravityisle.com/>

### **TRAVEL ADVISORY**

Tasmania has strict biosecurity procedures at airports and ports to prevent the introduction of unwanted pests and diseases. Make sure your bike frame/tires and riding shoes/clothing are totally clean and free from soil and other contaminants.

Please refer to

<https://nre.tas.gov.au/biosecurity-tasmania/biosecurity/travellers-guide-to-tasmanian-biosecurity-what-you-can-and-cant-bring-into-tasmania> for a complete guide to Tasmania's Biosecurity Requirements.

### **VEHICLE HIRE**

Budget Tasmania [www.budget.com.au](http://www.budget.com.au).

### **TRAVEL DOCUMENT REQUIREMENTS**

You must have a valid passport and a visa to enter Australia. Most foreign passport holders traveling to Australia for less than 90 days can obtain an Electronic Travel Authority (ETA). Special provisions apply to New Zealand nationals.

Please refer to <https://www.abf.gov.au> for travel document requirements for entry to Australia.





### **ACCOMMODATION**

As a very small town, there is very limited accommodation in Derby, most of which has already been booked for elite teams and event staff. Check out <https://www.airbnb.com.au> and <https://www.stayz.com.au> for nearby accommodation options

### **CAMPING**

There is a free camping ground in Derby. Amenities and conditions of stay:  
<https://ridebluederby.com.au/uploads/general/Derby-Park-Conditions-Of-Stay.pdf>

You may be able to camp on the Crickets Fields up from the Event Hub (across from Mutual Road).

### **PARKING**

Parking maps are indicated on the venue map. Please follow directions from event officials and volunteers for parking.

### **TOILETS**

Toilets are available at the Event Hub. Public toilets are available on the main street.

### **WIFI & POWER**

Availability in the Event Hub: TBC

The best recommended network for data is Telstra, for international travellers it is also recommended to purchase a Telstra Sim to use in your phone.

### **BIKE SHOPS**

Name, address and telephone number of nearest bike shop(s) are listed below;

- Vertigo MTB - 66 Main Street, Derby <https://www.vertigomtb.com.au/>
- Evolution Biking - 64 Main Street, Derby <https://www.ebiketasmania.com.au/>
- Derby Bike Shop - 59 Main Street, Derby <http://www.derbybikeshop.com.au/>
- Bark Off Biking - 30 Main Street, Derby <https://www.barkoffbiking.com.au/>
- Roll Cycles Launceston - 112 Cimitiere St, Launceston 7250, <https://rollcycles.com.au/>

### **BIKE WASH**

This will be located in the race village, please follow the signage. There will be no bike wash in the team pits or exhibition area.



### **GROCERY STORES**

Derby is very limited in terms of supplies and services.

Derby does not have a full range supermarket but the Derby General Store & Providore has some quality goods and basic supplies. Closest grocery store is IGB X Press in Branhholm (approximately 8kms away) Scottsdale is the closest big services town if you need anything major including a Woolworths supermarket.

### **BANK MACHINES**

Scottsdale:

- IGA Branhholm – 4 Scott Street, Branhholm
- Commonwealth Bank – 18 King Street, Scottsdale
- Westpac – 21 King Street, Scottsdale
- ANZ Bank – 17 King Street, Scottsdale

### **LOCAL BABYSITTERS**

Mini Shredders Babysitting Services

0413 966 416

[minishreddersderby@gmail.com](mailto:minishreddersderby@gmail.com)

<https://www.facebook.com/minishredders/>

### **OTHER RIDING OPTIONS**

If you are looking to do some extra riding during your time in Tasmania, check out:

- St Helens: <https://www.sthelensmtbtrails.com.au/>
- Georgetown MTB Trails: <https://georgetownmtbtrails.com.au/>
- Hobart:  
<https://www.hobartcity.com.au/Community/Events-and-activities/Tracks-and-trails/Mountain-biking-and-activities/Mountain-bike-tracks>
- Queenstown: <https://www.westcoast.tas.gov.au/community-and-recreation/mtb>

### **ACTIVITIES FOR NON-RACING PARTNERS and PLACES OF INTEREST**

<https://visitnortherntasmania.com.au/ewcmaydena>

### **EVENT MERCHANDISE**

Merchandise will be available for purchase in the Event Hub on the event weekend.



## 11. MEDICAL | [return to menu](#)

### **EMERGENCY RESPONSE**

Onsite medical will be located in the Event Hub. Emergency Medical Number TBC.

Emergency Notification and Services (Police, Fire, Ambulance): 000

Tasmania Police 131 444

Tasmania Fire Service 000 (stations: Derby, Scottsdale, Bridport)

### **NEAREST CLINIC / HOSPITAL**

Hospital – Scottsdale 03 6778 8522 & Launceston General Hospital 03 6777 6777

### **MASSAGE and PHYSIOTHERAPY**

Massage therapy and physiotherapist will be on site at the Little Rivers Brewing Village, Derby.

Ben Davis, East Coast Physio

Fri 14h00-17h00, Sat 09h00-17h00, Sun 08h00-16h00, or by appointment.

Services: physiotherapy, assessment, advice, massage, mobilisation, dry needling, taping.

Rate for competitors: \$50/30min

Contact: +61 0498 758 360

Elizabeth Atkins Bridport Body Maintenance

Shiatsu is a form of bodywork, an effective therapeutic technique which will release tension and restore energy. It is a deep tissue treatment combined with movement and stretch.

Rates: \$40 half hour / \$75 per/hour treatment.

Appointments available by contacting [lizzieatkins1@gmail.com](mailto:lizzieatkins1@gmail.com) or by +61 0448852552

### **CONCUSSION PROTOCOL**

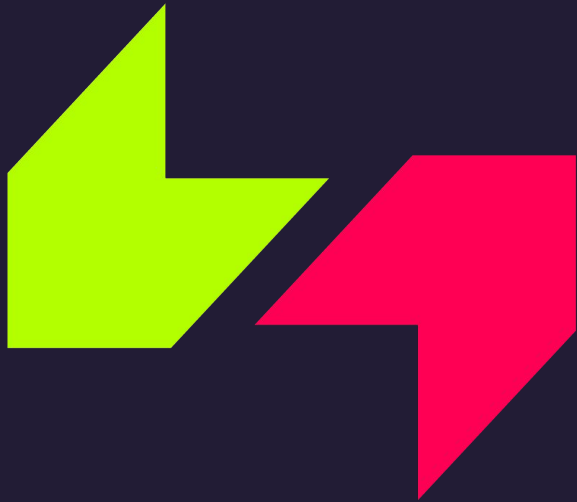
Any racer who fails a concussion assessment by a qualified medical practitioner, during that event, will be removed from the current practice session or race and will be prohibited from further participation in any practice session or race until cleared in writing by a doctor to resume such activity.

Should a concussion be confirmed by a medical doctor, the athlete is responsible for completing a "graduated return to activity" plan.

### **INSURANCE**

Racers are responsible for their own personal medical / accident insurance. Personal coverage is not provided by the event organizers.





# SEE YOU AT THE RACES!

For any queries please contact us on  
[sportsservices@eso-sports.com](mailto:sportsservices@eso-sports.com)

