

RACE BOOK

UCI Mountain Bike Enduro World Cup Round 6
Enduro of Loudenvielle

Loudenvielle-Peyragudes, France

30th August - 2nd September, 2023

Version 12 27/08/2023

SCHEDULE

Section 1 - Page 3

Schedule

V12 - Updated 29/08

EVENT NOTICES

Section 2 - Page 4

Event Communications

V5 - updated 31/07

CONTACTS

Section 3 - Page 4

Series and Organiser contacts

original

Websites and Social Media

original

MAPS

Section 4 - Page 5

Location

original

Venue Map

V9 - updated 16/08

UCI EDR Course Map

V11 - published 25/08

UCI E-EDR Course Map

V12 - updated 29/08

Open EDR Course Map

V11 - published 25/08

Open E-EDR Course Map

V11 - published 25/08

ENTRIES

Section 5 - Page 6

Event Entry Structure Overview

original

Registration

original

Entry Fees

V9 - updated 16/08

Cancellation Policy

V6 - updated 02/08

Race Licences

V7 - updated 03/08

Insurance

original

Disclaimer/ Liability Release

original

Rider Confirmation and Plate Collection

original

Team Accreditation and Season Passes

V4 - published 28/07

COURSE

Section 6 - Page 9

Overview

V6 - Updated 2/08/23

Course Map

to be published

GPS Route Map

to be published

RACE LOGISTICS

Section 7 - Page 10

Training

V10 - updated 21/08

Uplifts

original

Timing and GPS Trackers

original

Onboard Cameras

original

Equipment and Bike Marking

original

E-EDR Open Racing Equipment Rules

original

Feed Zones

V7 - updated 03/08

START LISTS, RESULTS and RANKINGS

Section 8 - Page 13

Start Order, Seeding and Start Lists

V9 - updated 16/08

Live Timing and Results

original



Ranking Points	original
Awards	original
Prize Money	original

RULES Section 9 - Page 16

Race Rules	original
Protection rules	V8 - Updated 04/08
Filming Rights and Regulation	original
Doping control	V3 - updated 26/07

TEAMS Section 10 - Page 17

Team Area Access	V12 - updated 27/08
Parking private cars of team members	V7 - updated 03/08
Team De-rig	V12 - updated 27/08

VENUE LOGISTICS Section 11 - Page 18

Travel and Transportation	original
Vehicle Hire	original
Accommodation	original
Camping	original
Parking	V11 - updated 24/08
Toilets	original
Showers	original
Water and Rubbish	original
Wifi and Network	original
Power	original
Security	original
Bike Shops	original
Grocery Shops	original
Bike Wash	original
Bank Machines	original
Activities for non-racing partners	original
Event Merchandise	original

MEDICAL Section 12- Page 20

Emergency Response	original
Hospital / Clinics	original
Massage and Physiotherapy	V5 - updated 31/07
Medical and Concussion Protocol	V6 - updated 31/08



1. SCHEDULE | [return to menu](#)

Wednesday 30/08/23	12:00 - 14:00	DHI	Track Closed - TV Inspection
	14:00 - 14:45	*	Rider Confirmation - UCI Elite MTB Teams
	14:45 - 15:30	*	Rider Confirmation - UCI MTB Teams
	15:30 - 18:00	*	Rider Confirmation - All Riders
Thursday 31/08/23	08:00 - 09:00	EDR*	Rider Confirmation - All Riders
	09:00 - 11:00	DHI	Track Closed - UCI Inspection
	09:00 - 11:00	DHI	Rider Confirmation - All Riders
	09:00 - 17:00	EDR	Practice - All Riders
	10:00 - 11:00	DHI	Foot Inspection Elite Teams
	11:00 - 13:00	DHI	Foot Inspection All Riders
	14:00 - 15:00	DHI	Training - Women Junior
	15:00 - 16:00	DHI	Training - All Juniors
	16:00 - 17:00	DHI	Training - Men Junior
	17:00	*	Press Conference
	19:00		Meeting w/ LOC UCI ESO
Friday 01/09/23	08:00 - 10:00	DHI	Final Rider Confirmation - All Riders
	08:30 - 10:30	DHI	Training - Group B
	9:00	EDR	RACE START: Amateurs
	10:30 - 12:30	DHI	Training - Group A
	12:30 - 14:00		Training - Group B (Live Track)
	14:00 - 15:30		Training - Group A (Live Track)
	15:45 - 16:00	DHI	RACE: World Cup - Qualification Women Junior
	16:00 - 17:00	DHI	RACE: World Cup - Qualification Men Junior
	17:00	EDR*	RACE FINISH: Amateurs
	19:00		Meeting w/ LOC UCI ESO
Saturday 02/09/23	08:30 - 10:30	DHI	Training - Group B
	9:00	EDR*	RACE START: World Cup
	10:30 - 12:30	DHI	Training - Group A
	12:45	DHI	RACE: World Cup - Final Women Junior
	13:15	DHI	RACE: World Cup - Final Men Junior
	14:00	DHI	RACE: World Cup - Qualification Women
	14:40	DHI	RACE: World Cup - Qualification Men
	17:30	EDR*	RACE FINISH: World Cup
	19:00		Meeting w/ LOC UCI ESO
Sunday 03/09/23	08:30 - 09:30	DHI	Training - Qualified Women
	09:30 - 10:30	DHI	Training - Qualified Men
	10:45	DHI	RACE: World Cup - Semi Final Women
	11:20	DHI	RACE: World Cup - Semi Final Men
	13:00	DHI	RACE: World Cup - Final Women
	14:00	DHI	RACE: World Cup - Final Men

**Schedule times are subject to change*



2. EVENT NOTICES | [return to menu](#)

EVENT COMMUNICATIONS / WHATSAPP

We will email out any major updates to all UCI Elite Teams, UCI Teams and National Federations electronically.

Athlete Whatsapp groups will be available to join and athletes can subscribe to the email distribution lists.

[World Cup](#)

[Open Racing](#)

3. CONTACTS | [return to menu](#)

SERIES and LOCAL ORGANISER CONTACTS

Race Director: Ludovic Henry ludovic.henry@sivalouron.fr

Race Manager: Alex Balaud alex.balaud@wbd.com

Registration and Teams/Racers: Kerry and Beth sportsservices@eso-sports.com

Team Contacts / Account Manager: Bex Reilly teams@eso-sports.com

Media Inquiries / Accreditation: Kate Ball kate.ball@wbd.com

Paddocks & Expo: Jasmines MERABET MARMONIER jasmines@pyreneesbikfestival.com

WEBSITES and SOCIALS

Website: www.ucimtbworldseries.com / www.pyreneesbikfestival.com

Instagram: [@uci_mtbworldseries](https://www.instagram.com/uci_mtbworldseries)

Twitter: [@MTBworldseries](https://twitter.com/MTBworldseries)

Facebook: [UCI Mountain Bike World Series](https://www.facebook.com/UCIMountainBikeWorldSeries)

Youtube: [@uci_mtbworldseries](https://www.youtube.com/@uci_mtbworldseries)



4. MAPS | [return to menu](#)

LOCATION



Loudenvielle-Peyragudes, France ([Google Map](#))

VENUE MAP



SHIMANO

WHOOP

CIC

Vittoria

OKALEY

GoPro

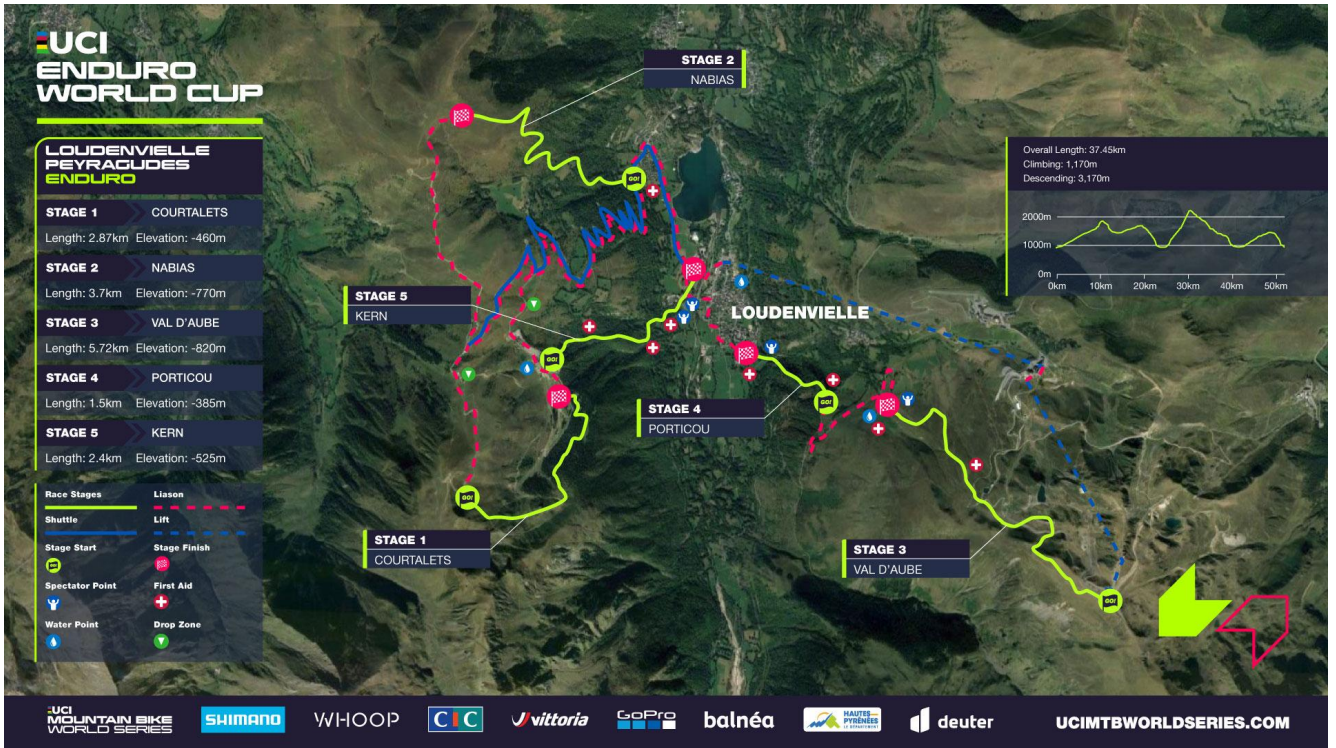
HAUTES-PYRÉNÉES
LE DÉPARTEMENT

deuter

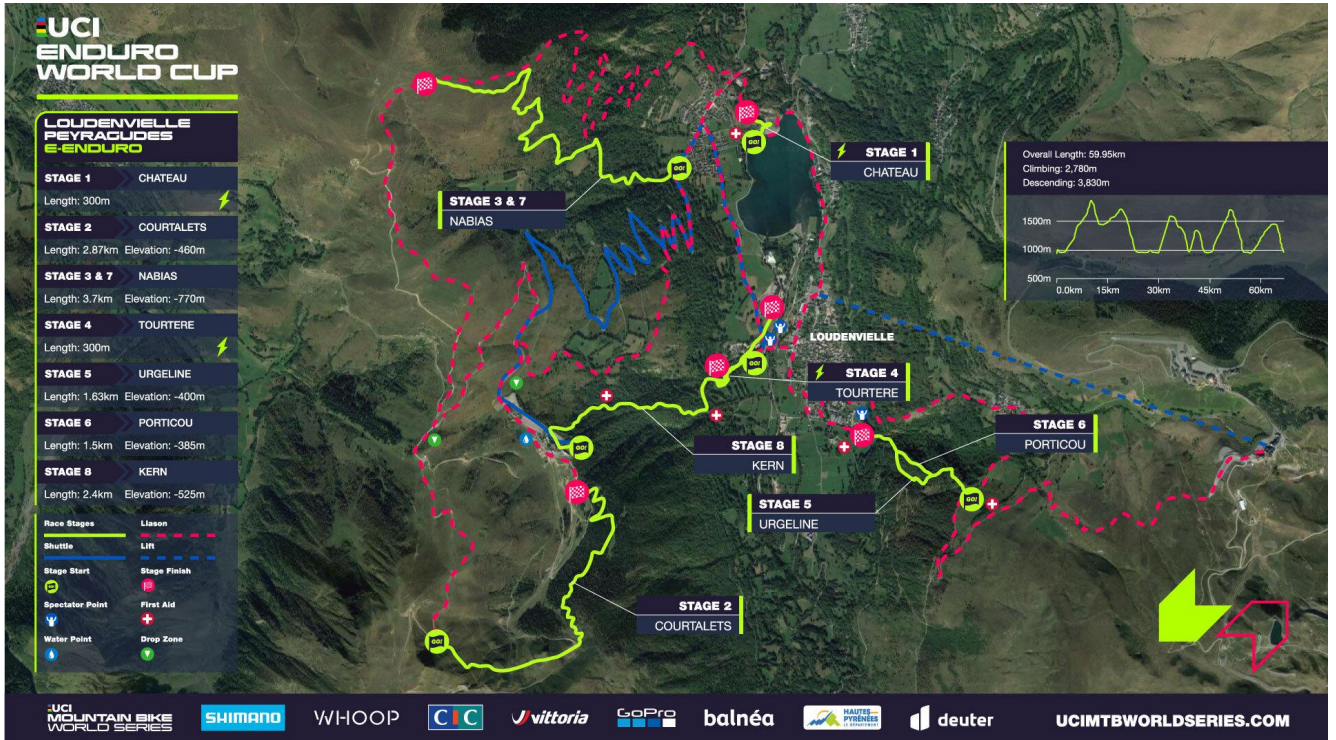
balnéa



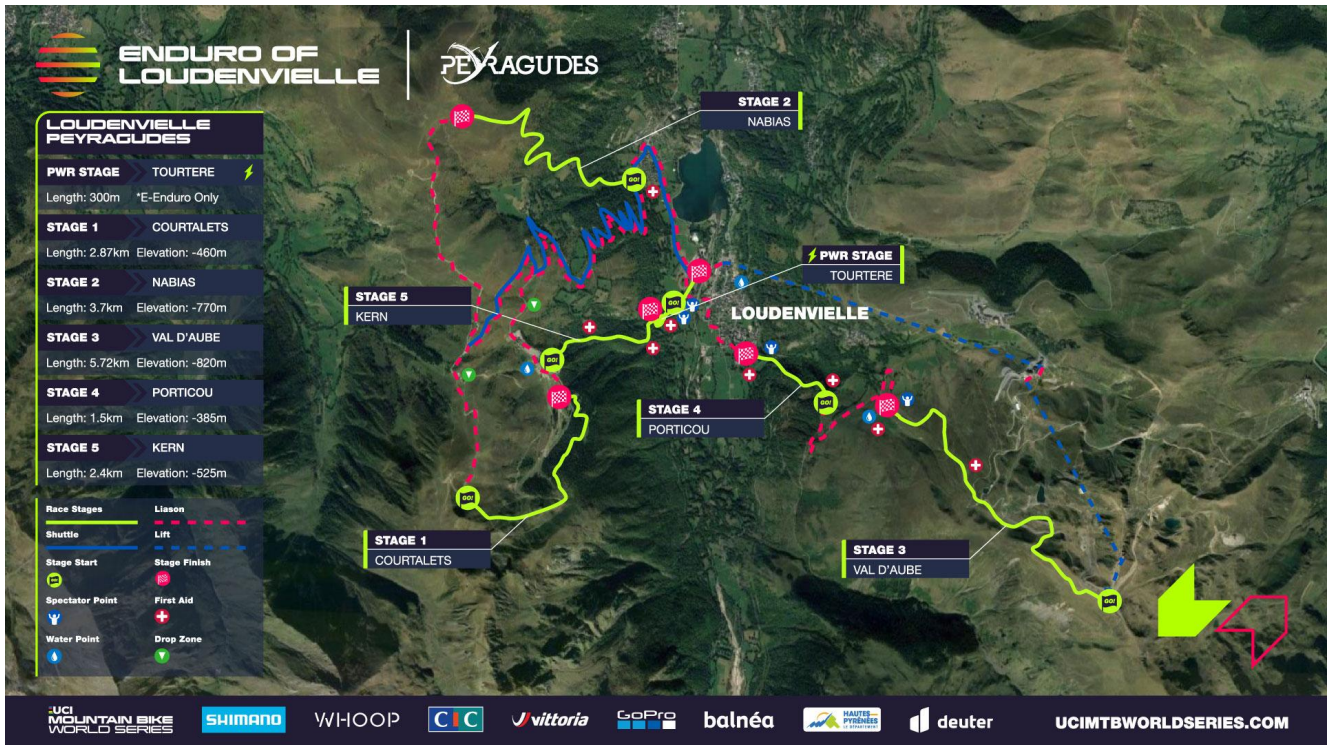
UCI EDR COURSE MAP



UCI E-EDR COURSE MAP





OPEN EDR/ E-EDR COURSE MAP



5. ENTRIES | [return to menu](#)

EVENT ENTRY STRUCTURE OVERVIEW

		OPEN RACING 
RACE CATEGORIES	Women Elite Women U21 (2003-2006) Men Elite Men U21 (2003-2006) Women E-EDR Men E-EDR	Women Women U21 (2003-2006) Women Master 35+ (1988+) Women Youth (2009+) Men Men U21 (2003-2006) Men Master 35+ (1988+) Men Master 45+ (1978+) Men Youth (2009+) Women E-EDR Women E-EDR Master 35+ (1988+) Men E-EDR Men E-EDR Master 35+ (1988+) <i>Any race category with fewer than 5 starters may be merged with another age category at the discretion of the Event Organiser & WBDS.</i>

RIDER REGISTRATION

RIDER ACCOUNTS

All riders need a UCI MTB World Series rider account (linked to a unique email address)

Create your account / access your profile at <https://www.ucimtbworldseries.com/login/>

UCI ENDURO WORLD CUP - TIER 1

In order to race in the UCI Enduro World Cup, riders must either be on an official UCI Enduro or Mixed Team or have the minimum required number of Global Ranking points or Golden Tickets.

Minimum Points:

- Men Elite: 125 points
- Women Elite: 125 points
- Men U21: 75 points
- Women U21: 50 points

Eligible riders will receive email notification with registration instructions / details.

OPEN RACING - TIER 2

No prequalification requirements - Please see our How to Enter page [HERE](#).

Public entries offered on a space available, first come basis.

<https://ucimtbworldseries.com/events/loudenvielle>



UCI EDR WORLD CUP QUALIFIER

All EDR Open Racing Riders with a valid UCI licence have the opportunity to upgrade into the UCI EDR World Cup.

Golden Tickets for the remaining UCI Enduro World Cup's will be available for the Fastest Man, Women, U21 Man and U21 Woman. All open racing categories will be merged to apply to UCI Enduro World Cup categories. If the minimum fields are met, then the second and third fastest will be offered a Golden Ticket in one UCI Enduro World Cup in the current season.

For further information regarding UCI Enduro World Cup Qualifiers, please read Chapter 3 of the 2023 Enduro Rulebook available [HERE](#).

ENTRY FEES

UCI Enduro/ E-Enduro World Cup: €180

Enduro / E-Enduro Open Racing: €105

Entries include all taxes and processing fees.

Entries will be processed through the centralised UCI MTB World Series entry system in EUROS (€).

Warner Brothers. Discovery Sports is acting as an agent for the local organising team.

Entry fee includes 1 day race, 1 day of closed course marshalled training, full course medical coverage on training and race days, race day feed zone (Open Racing only), race day neutral tech support and live timing. 2 Day lift pass practice and race days and 1 day Shuttle Service (race day).

(Shuttle service for Col d'Azet valley also available which is not included in entry price for practice day only, available to be booked [HERE](#) at €12 per uplift) - Please see 'TRAINING'

CANCELLATION POLICY

Organisers reserve the right to modify the schedule, format, duration, course, individual race stages or any other aspect of the Event, or delay or cancel the Event (or any individual race stages), if they believe the conditions are unsafe or otherwise unsuitable for the Event.

If an Event is relocated and/or rescheduled, the entries will be automatically transferred to the new date and/or location.

If a Racer is unable to attend the scheduled/ rescheduled dates and/or venue, the entry fees are refundable upto 30 days before (less €30 processing fee). See section 2.4. WITHDRAWAL within [Event Entry T&C's](#).

Refund window closes - 02/08/2023

RACE LICENCES

UCI ENDURO WORLD CUP

Race licenses are mandatory for eligibility and event entry.

International riders must have UCI licenses issued by their own national cycling federations.

You will need to record a UCI ID number in your Rider Account.

Riders will be required to present their licenses at the onsite check in. Photos or electronic copies are acceptable.

OPEN RACING

Active / valid UCI ID numbers required for riders to be eligible to collect UCI Enduro World Cup qualifying points. Number to be recorded in Rider Account.

Riders who do not have a UCI license issued by their National Federation (for example, French Federation Cyclisme) **must show a medical certificate** issued within the last year. If riders do not have a medical certificate, [the medical centre](#) in Loudenvielle will be able to issue the medical certificate at a cost of €26.

Upon providing your medical certificate at rider confirmation, riders will need to pay €10 for race insurance.

MEDICAL CERTIFICATES ARE NOT REQUIRED FOR RIDERS WITH A UCI LICENSE ISSUED BY THEIR NATIONAL FEDERATION.



INSURANCE

Personal insurance coverage is not provided by the WBDS/Organisers.

Racers are responsible for securing their own accident, rescue, health, travel, property and liability insurance.

Racers should have the following insurance coverage:

- Bodily injury (in and out-patient hospital expenses and medical care, emergency rescue and medical transport costs, permanent disablement, death) and material damages (loss of earnings) in case of accident in the course of the Event or during training
- Third-party liability insurance for material damage or bodily injury caused to others in the course of the Event or during training.
- Reimbursement of the entry fees and other ancillary costs resulting from an inability to participate in an Event

DISCLAIMER / LIABILITY RELEASE

Racers voluntarily assume full and complete responsibility for all risks associated with participating in the Event and for any injury, accident or damage that may occur during their participation in the Event, including by way of example and not limitation: (a) travelling to and from the Event; (b) falls; (c) mechanical failures of equipment; (d) collisions with other participants, spectators and fixed or moving objects; (e) the effects of weather, including temperature extremes; (f) use of chairlifts, gondola or shuttle vehicles; (g) traffic accidents; (h) trail and road conditions; and (i) the negligence of themselves and/or others.

RIDER CONFIRMATION AND PLATE COLLECTION

LOCATION - Race Office - White Marque, in front of the main stage as per event map.

Athletes can have someone collect their race package on their behalf, providing;

- The riders license is presented (World Cup)
- Parental authorisation (if applicable)
- Medical Certificate (Open Racers without a UCI license)
- All updates to Perkins account is accurate and current. Including emergency contact, medical conditions, insurance etc), agreement of Rider Rights / Terms and Conditions

HOURS (*subject to change*)

Wednesday 30th August

14:00 - 14:45 - UCI Elite MTB Teams rider confirmation

14:45 - 15:30 - UCI MTB Teams rider confirmation

15:30 - 18:00 - All riders confirmation

Thursday 31st August

08:00 - 09:00 - Final rider confirmation

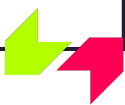
Check in Deadline: Riders who have not collected plate / checked in by 09h00 Thursday will not be included on the Start List.

Altering, cutting, or placing of unauthorised stickers or sponsor logos on race plate is not permitted.

TEAM ACCREDITATION & SEASON PASSES

Season passes have now been distributed for the season. No further accreditation provided, please bring your season passes.

Lift passes will be provided at rider confirmation, 1 per rider. For Team staff, 2 passes will be distributed for UCI Elite Teams and 1 pass for standard teams. Additional lift passes are available to purchase at €26 per day Gondola only or €32 per day Gondola and Chairlift.



6. COURSE | [return to menu](#)

MAP and GPS ROUTE:

Course GPS will be released on Friday 25th August along with the course map.

All stages are closed for riding from 25th August until official practice, however you may walk the tracks.

Terrain Type: The stages will see the continued progression of both speed and technicality in enduro racing, on trails purpose built for enduro bikes.

Course Overview

	UCI EDR WORLD CUP	UCI E-EDR WORLD CUP	OPEN RACING EDR	OPEN RACING E-EDR
STAGES	5	8	5 (4 for Youth Riders)	6
DISTANCE	37.5 KM	59.95 KM	37.5 KM	39.5 KM
ASCENDING	1170 M	2780 M	1170 M	1190 M
DESCENDING	3170 M	3870 M	3170 M	3190 M

TRAILFORKS

[UCI EDR WORLD CUP TRAILFORKS](#)

[UCI E-EDR WORLD CUP TRAILFORKS](#)



7. RACE LOGISTICS | [return to menu](#)

TRAINING

Official training will take place on Thursday 31st August and each racer will be limited to 1 training run on each Special Stage.

Race stages are closed during official training to all but racers, media and official UCI Enduro World Cup Team staff. All riders on course during practice must have plates on their bikes.

Any rider training without a plate or outside the official schedule will be disqualified.

Uplift passes provided at rider confirmation for Skyvall Gondola and Privilege Chairlift (provided at rider confirmation).

For the other climbs on the Col d'Azet valley, individual shuttle are permitted for 12€ per climb at :

<https://www.trailow.com/shop/vallee-louron/edr-practice>

Open racing riders can book shuttles for Thursday morning 09:00 - 12:00

UCI EDR/ E-EDR can book shuttles for Thursday afternoon 12:30 - 17:30

TIMING & GPS TRACKING

Timing system: SPORTident AIR+ system

Each racer will be issued two transponders (the second unit provides backup in case of loss or a crash). One transponder should be worn on each wrist (unless you are wearing a GPS watch, both transponders must be worn on one wrist).

Timing chips will be collected in the finish area of the race. Racers who withdraw or do not complete the race should return the chips to the timing tent in the finish area.

Timing stickers and timing chips will be issued at the start on race day. Racers should arrive at least 10 minutes prior to their individual start time to collect the chips.

If requested by WBDS, a racer must carry an official GPS/tracking device or POV camera supplied by WBDS during competition. The GPS/Tracking units and POV cameras will be distributed to the select riders before the start. Failure of a racer to carry their allocated device will result in a 500 EUR fine. All data will remain the right of WBDS. Lost or damaged timing chips, GPS or POV camera will be assessed a replacement fee.

ON BOARD CAMERAS

Only official UCI Teams and partners will be allowed to film at Tier 1 events (subject to the terms of the WBDS Broadcast Rights Agreement).

Only riders from official UCI Teams and partners will be permitted to wear onboard cameras during race days at Tier 1 events. All rights will be retained by WBDS.

Any onboard camera or live streaming of competition by riders or teams must be pre-approved by WBDS before broadcast. All broadcast rights for Tier 1 events remain the right of WBDS.

WBDS / UCI camera waiver

Any racer wearing an onboard camera during Official Training or races at a Tier 1/2 EDR event is deemed to have read and agreed to the Union Cycliste Internationale (UCI) [Technical Regulations](#) document, article 1.3.006 BIS. Please see the EDR Rulebook for further info.

FEED ZONES

There will be one feed zone for Open Racing and UCI Enduro World Cup only on course which will provide fruit, bakery items, and drinks. Water points will be located on the course map once published.

TECHNICAL ASSISTANCE ZONE (TAZ)

UCI Enduro World Cup

Technical assistance is only permitted in the Technical Assistance Zone.

Open Racing

Outside assistance is permitted.



EQUIPMENT AND BIKE MARKING

Only one frame, fork and one set of wheels can be used by a racer during a race.

Only upon approval of the Commissaire or Race Director, a racer may replace a frame, fork or wheel during the race.

A 3 minute penalty will be awarded to every racer who, having received approval by the Commissaire or Race Director, replaces the equipment listed above.

Any racer found to have replaced a frame, fork or wheel during the race without consent from the Commissaire or Race Director will be disqualified (DSQ).

A racer can use different/unmarked equipment during Official Training

Equipment Marking Stickers must be utilized at all **Tier 1 events**. Stickers must be applied on the rider's right hand side of the bike. This is not a requirement for Open Racing.

- Fork Crown
- Swingarm / Rear triangle
- Front triangle
- Both wheel rims
- E-EDR will receive two additional marking stickers which must be placed on both batteries

Stickers must be placed on the bike by the racer prior to the race start. Any problems with the Stickers must be reported to the Commissaire or Race Director at the earliest opportunity and/or prior to race start.

Racers who lose their Stickers prior to the race start may be issued a time penalty.

Racers' bikes will be checked for marking at the start of the race and at the finish of the final Special Stage. Other random checks of stickered equipment will be carried out throughout the race.

Following a repair, the racer must return to the Commissaire or Race Director to have the replacement part(s) re-marked (if applicable) before rejoining the race.

UCI EDR WORLD CUP BIKE MARKING



UCI E-EDR WORLD CUP BIKE MARKING



UCI E-EDR WORLD CUP RACING EQUIPMENT RULES

Bicycles (including motor and electronics) will be inspected by race officials prior to round 1 of the E-EDR World Cup. Further inspections may be carried out during or after every event. Refusal to allow this process will result in immediate disqualification. Motors are limited to 25kph as per EU standard EN15194.

Bikes shall have a motor of no more than 250w of continuous rated power and which is only to be activated by pedalling. Walk function allowed but only in factory settings.

Riders are limited to two batteries, one for each loop. There will be no technical restrictions on batteries. Riders are not allowed to carry spare batteries on their person.

In order to monitor motor output and ensure integrity of the regulations.

WBDS may fit bikes with a data acquisition box and/or a GPS tracker.

A 10% tolerance will be given for maximum speed, power output and wheel circumference. It is the racer's responsibility to ensure that their equipment is within these parameters and meets the EU standard EN15194.

E-EDR OPEN RACING EQUIPMENT RULES

Motors are limited to 25 kph as per EU standard EN15194.

Bikes shall have a motor of no more than 250w of continuous rated power and which is only to be activated by pedalling. Walk function allowed but only in factory settings

Riders are limited to one battery. There will be no technical restrictions on batteries.



8. START LISTS, RESULTS AND RANKINGS | [return to menu](#)

START ORDER, SEEDING & START LISTS

UCI Enduro World Cup

Riders will be seeded based on a combination of their current 2023 EDR World Cup and Global ranking, their final 2022 EWS Series and Global Ranking, and (if applicable) UCI EDR team status.

Loudenvielle Entry list is now available to view on the event page [HERE](#).

Women E-EDR

Men E-EDR

Men U21

Women U21

Women Elite (*outside top 10*)

Men Elite (*outside top 30*)

Women Elite (*top 10 UCI Enduro World Cup rank and protected riders*) - Group A

Men Elite (*top 30 current UCI Enduro World Cup rank and protected riders*) - Group A

The Top 20 Men Elite and Top 10 Women Elite will be awarded a fixed number board in relation to their 2022 EWS World Series ranking for the entire season.

Protected Riders - Riders with a fixed number plate relating to a previous year's ranking of top 20 (Men) and top 10 (Women) will be protected in the seeding for each UCI Enduro World Cup race. Any rider with a fixed number, not ranked within the Top 20 (Men) and Top 10 (Women) will start in order of the lowest number first from 21st place (Men) and 11th place (Women).

Select riders chosen by WBDS Sports, including protected riders returning from injury, can be added to the start list from position 21 (Men) and 11 (Women) but following all protected riders (see above).

Very select international riders not previously ranked in the UCI Enduro World Cup and chosen by WBDS Sports may also be seeded following the official UCI Team riders.

Riders moving from U21 to the Men/Women Elite categories may be manually seeded by WBDS for the first round of the current year.

Reseeding - Final stage / TAZ

Group A racers will be reseeded for the final stage based on the General Classification. The start order will be fastest last.

Any Group B racers ranked in the Top 20 (Men) and Top 10 (Women) of the General Classification will be reseeded to Group A after TAZ. A mandatory time check will be conducted at TAZ to ensure riders are reseeded accordingly.

Start Lists

Riders in the UCI Enduro World Cup will have individual preassigned start times for all the stages.

Start intervals between riders must be a minimum of 30 seconds. A 1 minute interval should be added every 10 – 20 riders to allow a clear gap to start riders who have missed their start.



A ten-minute interval between the Group A Men and the Group A Women categories must be allocated to allow accredited media to move on track.

Start List (with individual start times) will be published after onsite check in closes (09h00 Friday).

Riders will be issued a sticker with their individual stage start times at the start platform. Racers will have preassigned start times for all stages.

Late starters will receive a fixed penalty:

Up to 5 minutes late = 1 minute penalty

5+ minutes late = 5 minute penalty

30+ minutes late = DNF

Any racer arriving at the start of a Special Stage later than 30 minutes after their specified start time will be assigned a DNF for the race and should not complete any other stages.

Open Racing

Open Racing uses the self seeded Flexi Start Format.

Racers will be assigned a start time for rollout based on their Open Racing category.

Start Order:

E-EDR Men

E-EDR Men Master 35+ (1988+)

E-EDR Women

E-EDR Women Master 35+ (1988+)

EDR Men

EDR Men U21 (2003-2006)

EDR Men U17 (2007-2008)

EDR Men Master 35+ (1988+)

EDR Men Master 45+ (1978+)

EDR Women

EDR Women U21 (2003-2006)

EDR Women U17 (2007-2008)

EDR Women Master 35+ (1988+)

Once racers leave the start, they will need to complete the Special Stages in the specified order and within the designated time. But they will not be required to remain in the original start positions for the balance of the stages nor will they have preassigned individual start times or fixed start intervals for any of the following Special Stages. Riders can drop into Special Stages individually at a minimum of 5 second intervals.

Maximum course time and opening / closing times for the Special Stages will be published the day prior to the race. If a racer does not complete the course within their final time check, they will have a penalty added to their overall time.

Up to 5 minutes late = 1 minute penalty

5+ minutes late = 5 minutes penalty

Any racer arriving at the start of a Special Stage later than scheduled closing time will be assigned a DNF for the race and should not complete any other stages.



LIVE TIMING and RESULTS

Race Feed and Live Timing : www.ucimtbworldseries.com

Official Results (with penalties): www.ucimtbworldseries.com/results

AWARDS

Podium presentations will take place as soon as possible after the last finishing rider.

UCI Enduro World Cup

Podium presentations will be made for the top 3 riders in each category, the Team of the Day and Overall leading Team. Overall leading riders must also be present to be awarded the leaders jersey.

All riders must attend the podium as scheduled – failure to attend on time may result in a 200 EUR fine and / or a forfeiture of any relevant titles or prize money.

Leaders jerseys will be awarded to the series leaders in UCI Enduro World Cup Categories.

The leader's jersey is compulsory to wear for the rider leading a UCI World Cup standing.

Open Racing

Top 3 from each race categories will be awarded

Inappropriately dressed event staff (e.g. podium girls) are banned at all WBDS event award ceremonies.

RANKING POINTS

The EDR Global Rankings are based on the UCI Enduro World Cup, Tier 2 Open Racing, and Tier 3 World Series Qualifier events.

All points scored will be included in the EDR Global Rankings on a 12 month rolling basis.

UCI Enduro World Cup

Both Global Ranking and World Cup points are available. E-EDR results are not included in the EDR Global Rankings

Points are listed in Appendix 1 of the EDR Rulebook.

Open Racing

Riders in enduro Open Races with a valid / active UCI license at the time of the race will be eligible to collect EDR Global Ranking points as well as Golden Ticket UCI Enduro World Cup direct entries.

Riders should record their UCI ID number in their Rider Accounts.

Refer to Chapter 3 of the Rulebook for details regarding Golden Tickets and World Series Qualifier Ranking Points (Appendix 2)

PRIZE MONEY

UCI Enduro World Cup Men and Women Elite Prize Money minimums(EUR). Total prize purse = €12600. UCI E-Enduro World Cup Prize Money minimums(EUR) Total = €4600 (*Please note the below prize monies may differ*)

UCI EDR

1st	1500	6th	450
2nd	1200	7th	375
3rd	900	8th	300
4th	750	9th	150
5th	600	10th	75

UCI E-EDR

1st	1000
2nd	600
3rd	400
4th	200
5th	100



Riders or Team Staff must attend to the race office between 30 minutes and 90 minutes after the results to collect the prize money.
If the money is not picked up after 90 minutes, it remains with the LOC.

9. RULES | [return to menu](#)

RACE RULES

Riders are expected to read and understand the Race Book and Rule Book. Unfamiliarity will not be accepted as an excuse for any rule violation by any rider.

<http://www.ucimtbworldseries.com>

All rule violations must be filed, including the recording of witnesses, with the Commissaire or Race Director using the Rule Break Report Form.

No rule violation will be discussed with a rider unless a complete Rule Break Report Form has been submitted. The Race Director can appoint special 'Flying Marshals' to travel around the course at their own discretion to undisclosed points. These 'Flying Marshals' can report rule violations to the Commissaire or Race Director. WBDS officials may also report rule violations to the Commissaire or Race Director.

There is no appeal process for rule decisions following the hosting of the podium. All results will stand following this time.

The Commissaire and Race Director are authorised to give additional penalties (including verbal warnings, fines, relegation of position, time or points penalty and/or disqualification) that are not listed in the Rules in the case of a rider who fails to respect the other riders, the spirit of the sport, the environment or the organization.

President of the Commissaires Panel - Armando Esteves

PROTECTION RULES

Full face helmets, knee pads, back protector and gloves are mandatory during the special stages. A helmet with a detachable chin piece is acceptable. Open face helmets can be worn during liaison stages/transitions only.

FILMING RIGHTS AND REGULATIONS

Only official UCI Teams and partners will be allowed to film at Tier 1 events (subject to the terms of the WBDS Broadcast Rights Agreement).

DOPING CONTROL

All riders entered into the event must comply with all Anti-Doping regulations and procedures if asked to do so. Failure to do so will result in disqualification from that event and further penalisation as deemed appropriate by WBDS.

WBDS will follow all ITA rules, protocols and procedures. It is the responsibility of all riders, teams, coaches to read and follow all advice and documents provided by ITA.

Further information can be read in the EDR Rulebook.

Anti-Doping Location: Valgora Building Media Centre (See Venue Map) - Ground Floor



10. TEAMS | [return to menu](#)

TEAM AREA ACCESS

Paddock bookings have now closed.

Contact onsite - Jasmines MERABET MARMONIER jasmines@pyreneesbikefestival.com / +33787668167

Arrival Times - EDR Arrival Time Zones

- For the enduro paddocks, teams will be free to install their pit on Monday and Tuesday at their convenience, like last year.
- Please call Jasmines if you need anything.

Location of the entrance of the enduro paddock: [Repère sur le plan.](#)

Location of the entrance of the privateers/national selections paddock: [Repère sur le plan](#)

ROAD ACCESS:

- Access to Loudenvielle via the village of Genos is not permitted for vehicles higher than 2.4m.
- Please ensure you travel via an alternative route.

BIKE WASH:

Please note, there is no water supplied to paddocks and all bikes must be washed in the designated bike wash zones.

PARKING FOR PRIVATE CARS OF TEAM MEMBERS AND RIDERS

Parking available next to DHI paddock is free of charge, please note the number of parking passes here are restricted. 2 vehicles for Elite Teams, 1 vehicle for standard teams.

Car park stickers available to collect at the race office, please ensure the sticker is visible in your vehicle.

TEAM DE-RIG

Please be mindful not to derig your paddock the allocated time

- EDR Paddock : no derig before 4pm Saturday - no departure before Saturday 6:00 PM

Those seeing doing so will receive €1000. Failure to pay will result in your entry to future events being denied.



11. VENUE LOGISTICS | [return to menu](#)

TRAVEL / TRANSPORTATION

BY PLANE

Tarbes-Lourdes. Airport shuttles available (FARRUS Voyage, +33(0)608775746 or +33(0)561790678

Further international airports are in Toulouse, France (162km away), Biarritz Airport (227km away). Andorra Airport (184km away).

VEHICLE HIRE

Car hire is available at most international airports with a variety of providers. For your information the following links will be of use.

www.booking.com / www.expedia.com

ACCOMMODATION

For accommodation in the local area the following links will be of use.

www.booking.com

www.airbnb.com

Loudenvielle Tourism Office - +33562999535 / info@vallee-du-louron.com

CAMPING

Camping available for bookings at www.loudenvielle.wellness-sport-camping.com

PARKING

There will be a free of charge car park available to all racers (Open and UCI World Cup) in Balnea, [HERE](#)

There is further public parking available in town which is signposted.

TOILETS

In venue

SHOWERS

Non available

WATER & RUBBISH

Water taps on site and at the bike wash stations.

Please respect selective waste sorting.

WI-FI & NETWORK

Free wifi at the race office and beer tent.

Orange is the best phone network.



POWER

Available by request only with paddock booking by the relevant deadline.

SECURITY

Paddock Security will be in place 20:00 - 07:00 Monday 28th August - Monday 4th September.. Days to be confirmed.

Please do not leave bikes or equipment unattended at any time. Although surveillance will be in place individuals are responsible for their personal property at all times.

BIKE SHOPS

Intersport - Loudenvielle
Ski Set Sport Mountain - Loudenvielle
Papy Bikes - Peyragudes

GROCERY SHOPS

Carrefour Montagne - Loudenvielle
Intermarche - Luchon
Intermarche - Ancizan

BIKE WASH

Please see [Event Map](#)

BANK MACHINES

Crédit Agricole - Loudenvielle

OTHER RIDING OPTIONS

www.louronbikeandtrail.com - Magic Line, Candy, Privilege, Black Sheep

ACTIVITIES FOR NON-RACING PARTNERS and PLACES OF INTEREST

Spa at www.balnea.com , hiking and climbing, zip-line and sled at Peyragudes, Loudenvielle lake for water sports.

EVENT MERCHANDISE

Available in front of main stage.

SPECTATOR TICKETS

www.pyreneesbikfestival.com



12. MEDICAL | [return to menu](#)

EMERGENCY RESPONSE

Telephone number for emergency dispatch:

Ambulance Services: 112

Police Services: 17

Fire Services: 18

Medical Point will be located near the DHI Paddock, provided by Mountain Medic Events.

NEAREST CLINIC / HOSPITAL

The nearest Hospital is in Lannemezan, France, 43 km away.

644 Rte de Toulouse, 65300 Lannemezan, France

<http://www.ch-lannemezan.fr/>

MASSAGE and PHYSIOTHERAPY

Maison de Santé Loudenvielle - Fabienne Gourbeyre +33(0) 686731855

Monday, Friday and Saturday Morning 08:00 - 11:00

Wednesday - Thursday Morning 08:00 - 10:00

Thursday - Saturday Evening 18:00 - 20:00

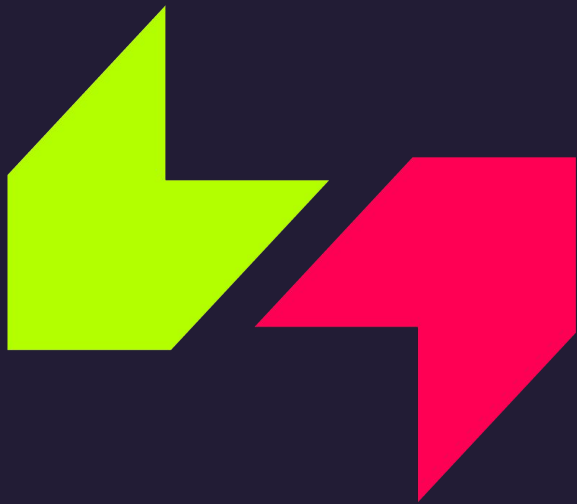
Location available [HERE](#).

MEDICAL AND CONCUSSION PROTOCOL

Sport-related concussion (SRC) is considered to be among the most complex sports-related injuries to diagnose, assess and manage. Our aim is to increase the recognition of and sensitivity of the diagnosis of SRC within elite cycling, and as a consequence, improve rider welfare.

For the full UCI Concussion Protocol and Field Application for the detection of concussion please see [link here](#).





SEE YOU AT THE RACES!

For any queries please contact us at
sportsservices@WBDS-sports.com

